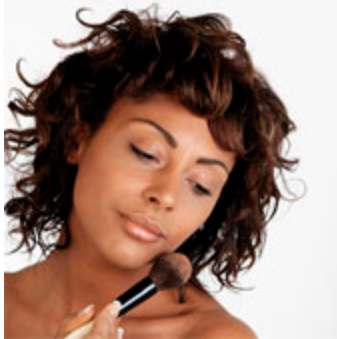


## Blush Application

### Application on Cheeks and Beauty Tips

Use a blush brush and lightly dip into desired color and apply along the cheekbone. Using a damp make-up sponge gives you more dramatic matte look.



### How to Get a Healthy Sun-Kissed Glow

Mahya Mineral Makeup product line colors designed for women who love the healthy and outdoorsy look. Our color selection will guide your makeup into creating natural-looking faces that featured bronzed skin and flushed cheeks.

Bronzers – if your skin is normal to oily, select a powder bronzer and apply it with a short, fluffy brush. For the most natural look, apply the bronzer where the sun naturally hits your face-your forehead, cheeks, nose, and chin. Be sure to dust your neck and chest if you're wearing a bare top.



The most natural-looking bronzers have predominantly brown tones (with a bit of red) to them. Pick your shade based on how you tan naturally. For example, if you turn a medium golden brown in the sun, a medium bronzer is your best bet. The bronzer should blend easily and warm up your face. If the color looks too orange or obvious, try one shade lighter.

Blush – Blush makes everyone prettier because it's an instant face brightener. A woman should have at least two blush colors: a natural one and a pop of color. Your natural shade of blush should look like your cheeks when you're naturally flushed (or after you've exercised). Your pop of color should be brighter and clearer (less muted)-for example, pink, coral, rose, or plum.

Find your most flattering shade of blush using this guide:

Complexion

Porcelain

Fair

Medium

Tan

Olive

Dark

Blush Shade

Pale pink or pastel apricot

Sandy Pink

Tawny brownish pink

Deep brownish rose

Plum, golden brown, or deep rose

Dark or deep bronze or deep red