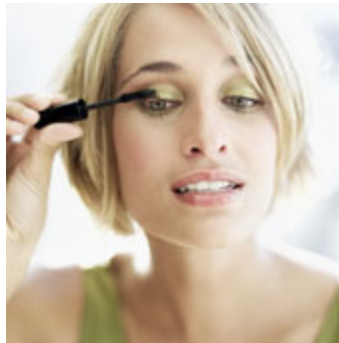


Mascara Application

Are you one of them?

Many women we know would never dream of leaving the house without mascara on. And with good reason-it's an easy way to dress up your eyes. The darkest black mascara looks great on most everyone. If you want a more natural look, you may choose a brown color. Before applying mascara, blot the end of the brush on tissue to get rid of excess mascara. Don't pump the wand in the tube because this will push air into the mascara and cause it to dry out. Holding the mascara parallel to the floor, work from the base to the tip of the lashes. Roll the wand as you go to separate lashes and avoid clumps.



How to get best results

Always apply mascara to upper lashes from underneath; brushing mascara over the top will weigh the lashes down. If you choose to apply mascara on lower lashes, use a lighter hand than you did on upper lashes. Apply one to two coats for a subtle look, and two to three coats for a more dramatic effect.

To give different colors on your eyelashes, use clear mascara. You can use a paper napkin to have a little bit of eye shadow minerals on to roll the wand. After you have some your favorite shadow mineral on the wand, you can apply on your lashes. Now, you can have some sparks on your lashes that matches the color of your eye shadow.

